



“HITCH-N-GO” CART

MODEL

⚠ WARNING

READ ALL INSTRUCTIONS AND WARNINGS BEFORE USING THE HITCH-N-GO

NOTE: Failure to read instructions AND WARNINGS before use could result in injury or death.

Instructions for Installation and Use:

Contents:

- 1- Hitch-N-Go Basket Assembly
- 1- “L” Receiver Bar
- 1- Winch Coupling
- 1- Receiver Hitch Coupling
- 2- Support Straps
- 1- Rear Axle Assembly
- 1- Front (steering) Axle Assembly
- 1- Pull Handle
- 2- Axles
- 4- Tires
- 4- Aluminum Wheel Spacers
- 1- Winch Handle
- 4- Cotter Pins
- 4- 5/8” Flat Washers
- 2- 5/16” x 5” Bolts
- 4- 5/16” x 2 3/4” Bolts
- 6- 5/16 Locknuts

- 1- 1/4x2” Bolt
- 8- 1/4”x1/2” Bolts
- 16- 5/16” Flat Washers
- 9 -1/4” Jam Locknuts
- 2- Thin Nylon Washers
- 8-1/4” Flat Washers

TOOLS NEEDED:

- 2-1/2” End Wrenches

- 2-7/16” End Wrenches

NOTE: Small adjustable wrench can be substituted for one of the End Wrenches.



STEP 1: Review contents to ensure all parts are received.

STEP 2: Remove nut from winch. (FIG.1). Install handle, replace nut and tighten. (FIG.2) Set aside for later use.

STEP 3: Place basket assembly upside down on work surface with handle holder and locking pin facing to your right. (FIG.3) Place steering axle assembly on right side of basket assembly and secure with 4- 1/4" x 1/2" bolts, 4- 1/4" fender washers, and 4- 1/4" jam locknuts. (FIG. 4) NOTE: Place fender washer on bolt and slip into opening of rung on basket. (FIG. 5)



FIG. 1



FIG. 2



FIG. 3



FIG.4

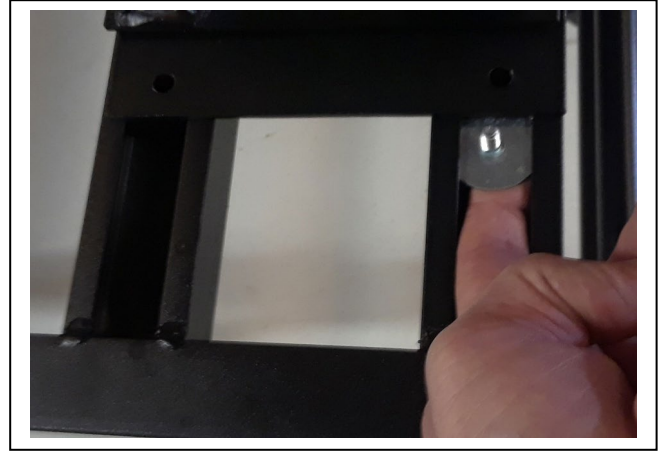


FIG. 5

STEP 3 CONT'D: Slide bolt and washer under axle assembly and insert through hole. Install locknut on bolt. **HAND TIGHTEN ONLY!** (FIG.6)

Repeat process with other 3 bolts. Center axle assembly in middle of basket and tighten all 4 bolts securely. (FIG.7)
NOTE: Washers will bow as bolts are tightened.

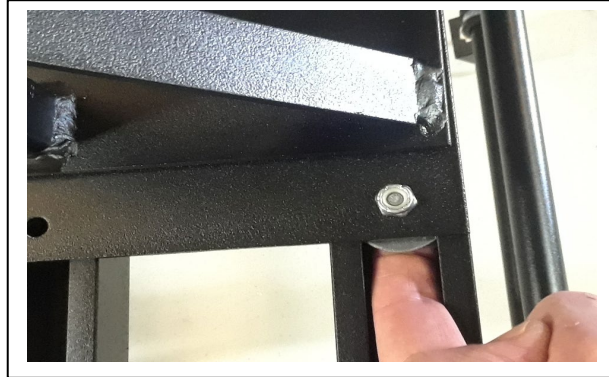


FIG.6

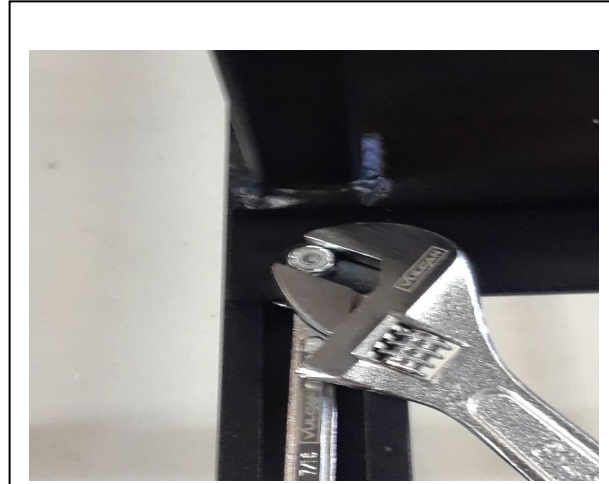


FIG. 7

STEP 4: Follow instructions for Step 3 to install rear axle assembly to left end of basket. (FIG. 8)



FIG.8

STEP 5: Attach "L" basket bar to basket by placing "L" bar on basket with vertical part of bar towards you and turned down. (FIG. 9). Feed 5/16" x 5" bolt up through hole in center of basket and through the "L" bar. Once end of bolt is visible, place center hole of support brace over bolt and secure with flat washer and 5/16" locknut. Finger tighten only. (FIG. 10).



FIG. 9

STEP 6: Connect the ends of support braces to basket rails using 5/16" x 2 3/4" bolts, flat washers, and 5/16" locknuts. Hand tighten only. Once the 3 bolts are installed, tighten with wrenches. (FIGS. 11&12). NOTE: Support braces will bend when attaching to basket. (FIG. 13)

STEP 7: Repeat steps 5 & 6 to attach the "L" bar and support braces on other side of basket.



FIG. 10

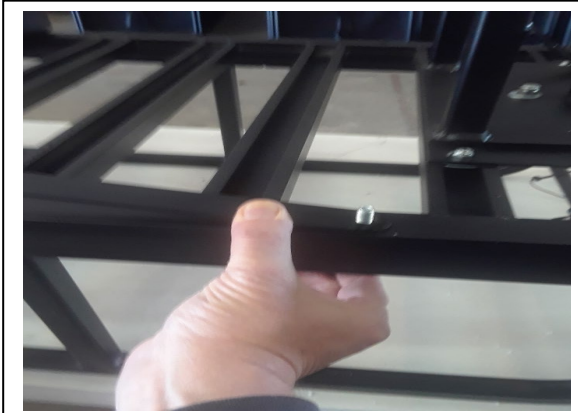


FIG. 11



FIG. 12



FIG. 13

STEP 8: Attach pull handle to steering axle assembly using 1- ¼ x 2" bolt, 2- flat washers, one under head of bolt and one under locknut, 2- thin nylon washers and 1- ¼" jam nut. (FIGS. 14&15).

NOTE: Nylon washers will be between handle channel and steering mount. Tighten bolts.
NOTE: Bolt should not be overtightened to allow for movement.



FIG.14

STEP 9: Slide axles through holes in axle assemblies. (FIG.16). Next slide wheel spacers over axles. (FIG.17). Slide wheels over axles until end of axle is visible. (FIG.18)
NOTE: Make sure valve stems on wheels are facing out. Secure wheels to axles using 5/8" flat washers and cotter pins. (FIG.19)

Your Hitch-N-Go Cart is now fully assembled and can be turned over and placed on its wheels.



FIG.15



FIG. 16



FIG. 17



FIG. 18



FIG. 19

INSTRUCTIONS FOR MOUNTING TO VEHICLE

STEP 1: Install receiver coupling into vehicles receiver hitch. (FIG. 1). Secure with hitch pin and cotter pin. (FIG.2)



FIG. 1

STEP 2: Roll cart up to the stop on the receiver coupling. (FIG. 3 Next page). Slide winch coupling into receiver coupling and over cart bar. (FIG.4 Next Page). Pin receiver and winch coupling together using hitch pin and cotter pin. (FIG. 5 Next page).



FIG.2



FIG. 3



FIG. 4



FIG. 5

STEP 3: Release latch on winch and pull strap down and attach to cart bar. (FIGS. 6&7).



FIG. 6



FIG. 7

STEP 4: Engage winch and raise cart until it stops. Pin in place with hitch pin and cotter pin. FIGS. (8&9 Next Page)



FIG. 8



FIG.9

STEP 5: Secure handle to cart in its upright position using bracket and quick clip pin. (FIG. 10)



FIG.10

STEP 6: When cart is in it's fully raised position, it may be locked in place using a long shank lock (NOT INCLUDED). (Fig 11)

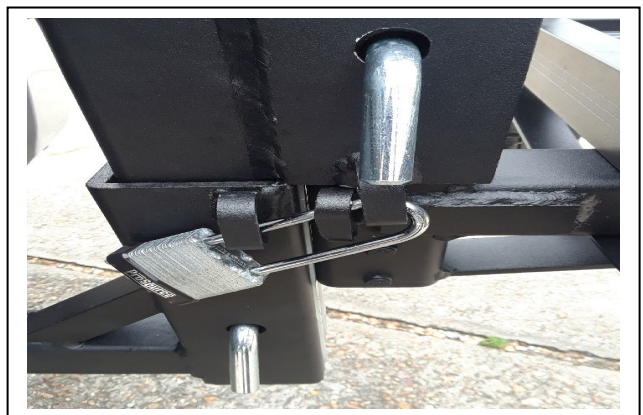


FIG.11

STEP 7: To disconnect cart from vehicle, reverse steps 1-5. Winch coupling can be stored in vehicle and receiver coupling can be left installed on vehicle.

⚠ WARNING

ALWAYS MAKE SURE HITCH PINS ARE IN PLACE AND SECURE!

⚠ WARNING

DO NOT EXCEED WEIGHT CAPACITY OF HITCH-N-GO CART!

⚠ WARNING

NEVER HAUL PEOPLE OR PETS IN CART!

⚠ WARNING

ALWAYS MAKE SURE CARGO IS SECURED TO CART!

⚠ WARNING

MAKE SURE HANDLE IS SECURED IN UPRIGHT POSITION BEFORE DRIVING!

⚠ WARNING

USE THE WINCH TO CONTROL THE SPEED OF THE CART WHILE LOWERING IT. KEEP YOUR HAND FIRMLY ON WINCH HANDLE UNTIL CART IS COMPLETELY LOWERED TO GROUND!

For more information about this or other products, contact us at:

Great Day, Inc.