



UTV FRONT RACK MODEL: UVFR751

WARNING

READ ALL INSTRUCTIONS & WARNINGS BEFORE USING THE UTV FRONT RACK

NOTE: Failure to read instructions before use could result in injury or death.

Instructions for Installation and Use:

NOTE: IF INSTALLING ON POLARIS 570XP OR 900XP REFER TO PAGE 5!



CONTENTS

Contents:

- 1 – UTV FRONT RACK
- 2 – F SHAPED HORIZONTAL RACK SUPPORTS
- 1 SET – ROLL BAR ANGLE BRACKETS *THESE HAVE 3 HOLES ON 1 SIDE. THERE IS A LEFT AND A RIGHT BRACKET.
- 1 SET- ROLL BAR ANGLE BRACKETS FOR VEHICLES WITH WINDSHIELD. (SEE NOTE #1)
- 2 SETS – BRUSH GUARD ANGLE BRACKETS *THESE HAVE 2 HOLES ON 1 SIDE AND 1 HOLE ON THE OTHER SIDE. CHOOSE WHICH SET WORKS BEST WITH YOUR VEHICLE.
- 2- 5/16" X 2 1/4" BOLTS & 2 – 5/16" WINGKNOBS
- 4- 5/16" X 2" U-BOLTS
- 16- 5/16" LOCKNUTS
- 12- 1/4" LOCKNUTS
- 4- 1/4" X 3 1/2" BOLTS
- 8- 1/4" X 1 3/4" BOLTS
- 2- 5/16" X 3 1/2" BOLTS
- 4- THICK SPACERS
- 4- THIN NYLON WASHERS
- 2- MEDIUM NYLON WASHERS
- 60- FLAT WASHERS
- 4- THIN WALL PLUGS
- 4- SETS OF VERTICAL SUPPORT BARS (VARIOUS LENGTHS)

STEP 1: SEE FIG. 1 (PAGE 4)

ATTACH HORIZONTAL SUPPORT ANGLES TO UTV ROLL BAR APPROXIMATELY LEVEL WITH THE TOP OF UTV'S HOOD USING 2 – 5/16" X 2" U-BOLTS, WASHERS & LOCKNUTS PROVIDED. (THESE BRACKETS HAVE 3 HOLES ON ONE SIDE.)

****NOTE** #1:** IF THE UTV HAS A WINDSHIELD, REMOVE BOLT FROM BOTTOM WINDSHIELD CLAMPS, SUBSTITUTE SMALL ANGLE BRACKETS, WHICH HAVE 1 HOLE ON EACH SIDE, AND PLACE CLAMP BOLT THROUGH ANGLE AND BACK TO CLAMP.

STEP 2: SEE FIG. 2 (PAGE 4)

MEASURE THE DISTANCE BETWEEN ANGLE SUPPORTS. ATTACH F-SHAPED HORIZONTAL RACK SUPPORTS TO FRONT RACK USING 4 – 1/4" X 3 1/2" BOLTS, WASHERS AND LOCKNUTS PROVIDED. SELECT THE PROPER HOLES TO ACHIEVE DESIRED WIDTH FOR SUPPORT BARS TO REST ON THE ANGLE SUPPORTS.

STEP 3:

USING 5/16" X 2 1/4" BOLTS, WINGKNOBS & MEDIUM NYLON WASHERS, CONNECT SUPPORT BARS TO ANGLE BRACKETS. WHILE HOLDING THE FRONT RACK LEVEL, MEASURE FROM CENTER OF HOLE IN ANGLE ON THE FRONT OF RACK TO THE BRUSH GUARD OF UTV. THIS MEASUREMENT WILL DETERMINE WHICH SET OF VERTICAL SUPPORT BARS YOU NEED.

STEP 4: SEE FIG. 3 (PAGE 4)

ATTACH SELECTED SUPPORT BARS TO ANGLES ON THE FRONT OF RACK USING 2 – 1/4" X 1 3/4" BOLTS, WASHERS, NYLON WASHERS AND LOCKNUTS PROVIDED. NYLON WASHERS SHOULD BE INSTALLED BETWEEN ANGLE AND SUPPORT BARS. DO NOT OVER TIGHTEN HARDWARE.

STEP 5: SEE FIG. 4 (PAGE 4)

ATTACH BRUSH GUARD SUPPORT ANGLES TO BOTTOM ENDS OF THE VERTICAL SUPPORT BARS USING 2 – 1/4” X 1 3/4” BOLTS, WASHERS, NYLON WASHERS AND LOCKNUTS AS DONE IN STEP 4-FIG. 3 (ABOVE).

STEP 6: SEE FIG. 5 (PAGE 4)

ATTACH BRUSH GUARD SUPPORT ANGLES TO UTV BRUSH GUARD USING 2 – 5/16” X 2” U-BOLTS, WASHERS & LOCKNUTS PROVIDED.

****NOTE** #2:** TO ACCESS STORAGE SPACE IN THE FRONT OF UTV, REMOVE THE 2- 5/16” x 2 1/4” BOLTS AND WINGKNOBS.

⚠ WARNING

WEIGHT CAPACITY: 250 LBS. DO NOT EXCEED WEIGHT CAPACITY.

⚠ WARNING

NEVER ALLOW ANYONE TO SIT OR RIDE IN UTV FRONT RACK AT ANY TIME.

⚠ WARNING

MAKE SURE ALL CARGO IS PROPERLY SECURED IN UTV FRONT RACK BEFORE UTV IS IN MOTION.

⚠ WARNING

PLEASE READ AND FOLLOW ALL INSTRUCTIONS AND WARNINGS FURNISHED WITH UTV FRONT RACK.

⚠ WARNING

NEVER USE UTV FRONT RACK FOR ANY PURPOSE OTHER THAN INTENDED USE.

For more information about this or other products, contact us at:

Great Day, Inc.

604 Kimbrough Dr. * Tallulah, LA 71282 * (866) 649-1918 * www.greatdayinc.com



FIG. 1

FIG. 2

FIG. 3

FIG. 4

FIG. 5

STEP 1:

INSTALL 1- 5/16" X 1 1/4" BOLT, 2 FLAT WASHERS AND LOCKNUT INTO MIDDLE HOLE OF THE LEFT AND RIGHT ANGLE BRACKETS (BRACKETS WITH THREE HOLES ON ONE SIDE). TIGHTEN COMPLETELY.

NOTE: THIS BOLT WILL ACT AS A HORIZONTAL REST WHEN INSTALLED. SEE FIG. 1 & 2



FIG. 1



FIG. 2

STEP 2:

REMOVE THE BOTTOM ALLEN BOLT SECURING ROLL BAR SECTIONS ON EACH SIDE OF POLARIS.

STEP 3:

INSTALL THE BRACKET TO EACH SIDE OF RANGER USING 1- 5/16" X 3 1/2" BOLT AND 12 FLAT WASHERS AND LOCKNUT.

NOTE:

10 OF THE FLAT WASHERS ARE TO BE USED BETWEEN ANGLE BRACKET AND ROLL BAR. THESE WILL FILL THE VOID LEFT BY THE HEAD OF THE REMOVED ALLEN BOLT. **SEE FIG. 3**

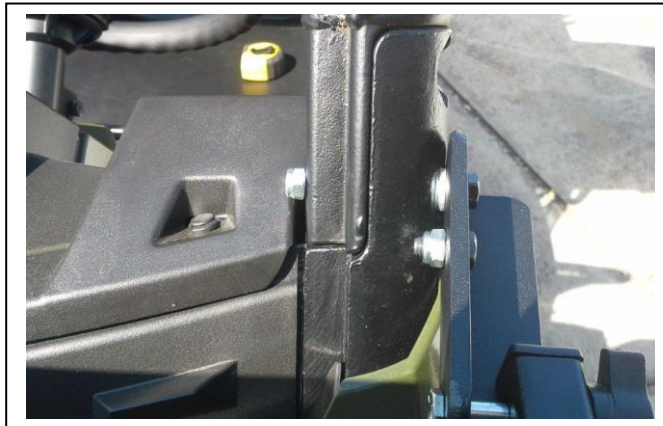


FIG. 3

BOLT WILL PROTRUDE THROUGH INSIDE OF ROLL BAR. TIGHTEN ALL ASSEMBLIES. BRACKETS SHOULD SIT HORIZONTAL TO THE GROUND. **SEE FIG.4**



FIG. 4

REFER BACK TO STEP 2 OF INSTRUCTION MANUAL FOR REMAINDER OF INSTALLATION.